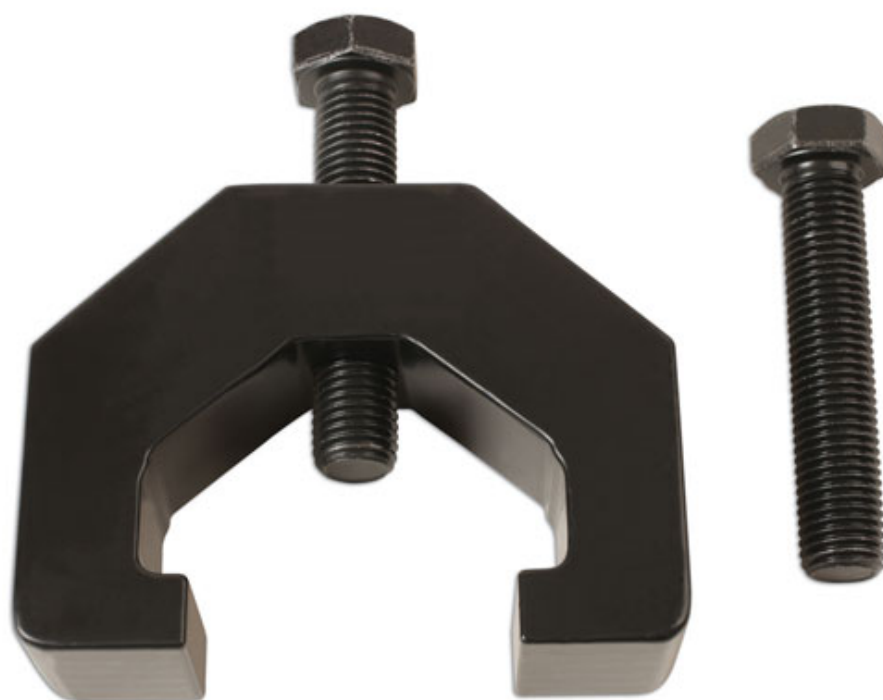


## Steering Drop Arm Puller - for Land Rover 57.5mm

Over time the steering drop arm and the steering box splines corrode together making it difficult to remove the drop arm. Using this puller will ensure the steering box shaft and oil seal remain intact.



### Additional Information

- Application: Land Rover Defender, 90, 110, 130 (1987 - 2006).
- Designed for the removal of the steering drop arm from the steering box.
- Over time the steering drop arm and the steering box splines corrode together making it difficult to remove the drop arm. Using this puller will ensure the steering box shaft and oil seal remain intact
- 
- 

<http://lasertools.co.uk/product/6664>

